

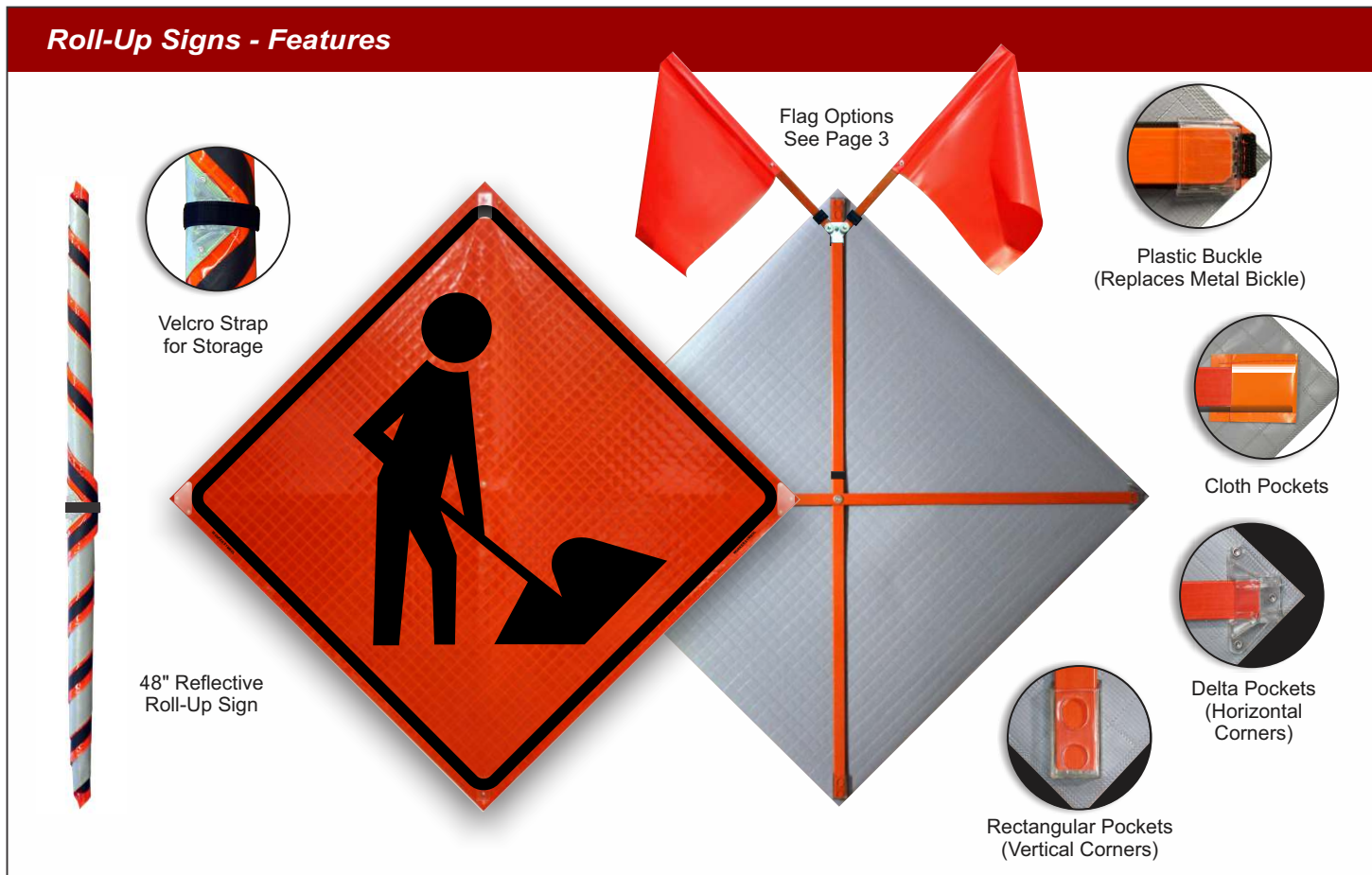
Roll-Up Signs - West

FACT SHEET



1

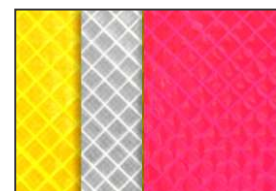
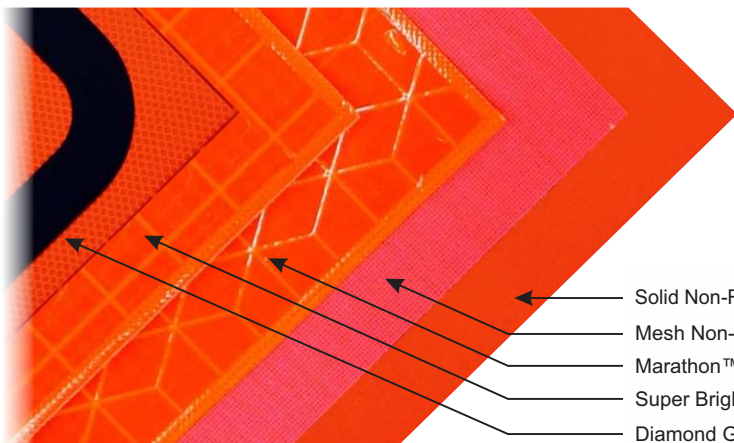
Roll-Up Signs - Features



Materials and Specifications

Available in a variety of materials and sizes, roll-up signs offer full size signage in a lightweight and easy to store design.

- All roll-up stands are MUTCD and NCHRP-350 compliant.
- Fiberglass ribs, or cross bracing, feature a protective veil to prevent blooming and painful splinters.
- Many standard legends available, see page 2. Custom legends are available on request.
- Corner pockets are made of tough polycarbonate for durability.
- Hook and loop strap for storage.
- Overlays for changeable message signs are also available.



Other reflective Super Bright™ sign colors: Yellow, White, Pink



DICKE Safety Products

www.dicketool.com

Illinois - 1201 Warren Avenue - Downers Grove, IL 60515 - Ph: 630.969.0050 - Fax: 630.969.3973
 Oregon - 1845 Anunsen Street, N.E. - Salem, OR 97301 - Ph: 800.333.5641 - Fax: 503.364.0340

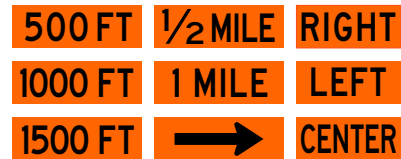
Current Screen List

Sign legends may be printed on any reflective or non-reflective material. Most legends may be equipped with velcro strips to allow the use of overlays. Custom legends and stenciling on the backs of signs are also available for an additional fee.

Abrupt Edge
 Accident Ahead
 Be Prepared To Stop (W3-4)
 Begin Work Zone
 Bike Lane Closed Ahead
 Bike Symbol Share The Road
 Bikes on Roadway
 Border Only
 Bridge Work Ahead
 Brush Cutter Ahead
 Bump (W8-1)
 Bump Ahead
 Caution Log Trucks
 Center Lane Closed Ahead (W20-5C)
 Construction Ahead
 Danger Overhead Power Lines
 Detour with Velcro
 Detour Ahead (W20-2)
 Dip (W8-2)
 Do Not Pass (R4-1)
 Emergency Scene Ahead
 Emergency Truck Repair Ahead
 End Road Work (G20-2)
 End Utility Work
 End Work Zone
 Exit - W/ Arrow
 Fire Activity Ahead
 Flagger Ahead (W20-7)
 Flagger Symbol (W20-7A)
 Flagger Paddle Symbol - short staff
 Flagger Paddle Symbol - long staff
 Fresh Oil (W21-2)
 Grooved Pavement (W8-15)
 Guardrail Damage Ahead
 High Water
 Incident Ahead
 Keep Left with Arrow Symbol (R4-8A)
 Keep Right with Arrow Symbol (R4-7A)
 Lane Closed (C30)
 Lane Closed Ahead
 Left Lane Closed
 Left Lane Closed Ahead (W20-5L)
 Litter Crew Ahead

Log Trucks Entering Highway
 Loose Gravel (W8-7)
 Men Working
 Men Working Ahead
 Merge Left
 Merge Right
 Merge Symbol Left (W4-1L)
 Merge Symbol Right (W4-1R)
 Motorcycles Use Extreme Caution
 Mowing Ahead
 Narrow Lane (C12)
 New Traffic Pattern Ahead (W23-2)
 No Right Turn (Text)
 No Right Turn Symbol (R3-1)
 No Left Turn (Text)
 No Left Turn Symbol (R3-2)
 One Lane Ahead
 One Lane Road Ahead (W20-4)
 Pipeline Construction Ahead
 Pipeline Crossing Ahead
 Prescribed Burn Ahead
 Prescribed Burn Ahead Do Not Report
 Ramp Closed
 Ramp Closed Ahead
 Ramp Closed Kit with overlays
 Ramp Work Ahead
 Reduced Speed Ahead (R2-5)
 Reduce Speed Ahead Symbol (W3-5)
 Reverse Curve Arrow symbol-Left (W1-4L)
 Reverse Curve Arrow symbol-Right (W1-4R)
 Right Lane Closed
 Right Lane Closed Ahead (W20-5R)
 Right Two Lanes Closed Ahead (W20-5A)
 2 Right Lanes Closed Ahead (C20)
 Right Shoulder Closed (W21-5A)
 Right Shoulder Closed Ahead (W21-5B)
 Road Closed (R11-2)
 Road Closed Ahead (W20-3)
 Road Closed to Thru Traffic (R11-4)
 Road Machinery Ahead (W21-3)
 Road Work Ahead (W20-1)
 Rough Road (W8-8)
 Rumble Strips

Rumble Strips Ahead
 Shoulder Closed
 Shoulder Closed Ahead
 Shoulder Drop Off Symbol (W8-17)
 Shoulder Work (W21-5)
 Shoulder Work Ahead
 Sidewalk Closed
 Signal Work Ahead
 Single Lane Ahead (W20-6)
 Slow
 Smoke Limited Visibility
 Special Event Ahead
 Speed Limit XX (R2-1)
 Speed Reduction Ahead Symbol (W3-5)
 Steel Plate Ahead (W8-24)
 Stop Ahead Symbol (arrow) (W3-1)
 Stop for Pedestrians (R1-6A)
 Stop Sign Symbol (octagon) (R1-1)
 Survey Crew (W21-6)
 Survey Crew Ahead
 Timber Falling
 Transition Right Symbol (W4-2L)
 Transition Left Symbol (W4-2R)
 Transition Symbol (Double)
 Tree Work Ahead
 Truck Crossing (W8-6)
 Trucks Entering and Leaving Highway
 Trucks Entering Highway
 Trucks Entering Roadway
 Trucks Entering Exiting
 Uneven Lanes (W8-11)
 Utility Work Ahead (W21-7)
 Water Over Road (W14-7)
 Work Area Ahead
 Work Zone Begins
 Worker Symbol (W21-1A)
 Workers Ahead
 Wreck Ahead
 Yield Ahead Symbol (arrow) (W3-2)
 Yield Symbol (R1-2)
 Yield for Pedestrians (R1-6)
 Yield To Oncoming Traffic

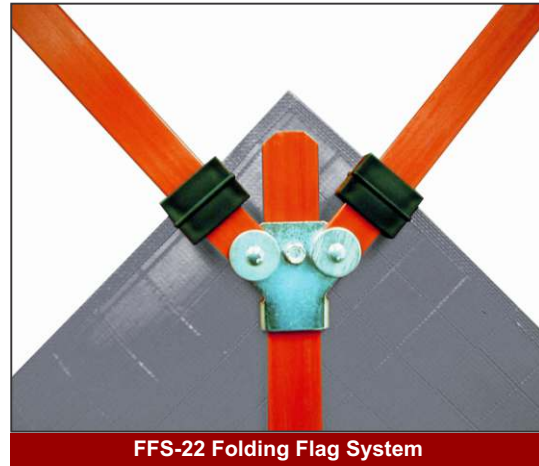


Standard overlays attach to signs with velcro. Many other messages available on request.

Permanently Attached Flag Systems

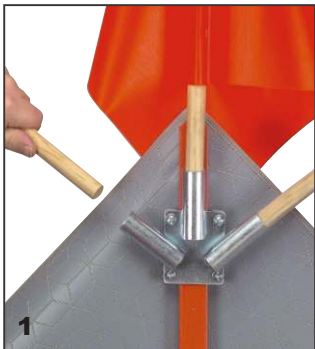


This permanently attached folding flag system insures that flags will always be handy and ready to deploy. Rotate flags from their storage position to the display position for use, reverse to store sign. Flags are 18" x 18" blaze orange vinyl coated nylon on 1" wide fiberglass staffs. FFS-12 has 2 flags, FFS-13 has 3 flags.



Designed to allow permanently mounted warning flags to be quickly locked in place, flags deploy by rotating into the display position and sliding the clip down. Reverse for storage. Flags are 18" x 18" blaze orange vinyl coated nylon on 1" wide fiberglass staffs. FFS-22 has 2 flags, FFS-23 has 3 flags.

Flag Holders for Detachable Flags With Round Staffs



These flagholders are made of zinc plated steel and are designed for use with flags that have a 3/4" round staff. See page 33.

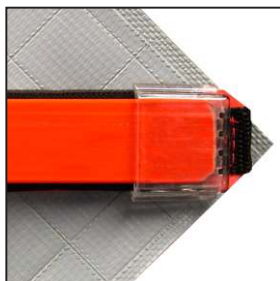
- 1 - **FHRU** - Has a front and back plate that clamp together with four nuts and screws allowing the flagholder to be attached to the vertical rib of a roll-up sign without drilling a hole through the rib. Displays three flags.
- 2 - **RL-FH3** - Has a channel shaped plate and a single hole allowing it to be attached to the vertical rib of a roll-up sign with a single nut and bolt, a 1/4" hole in the vertical rib is required. Displays three flags.
- 3 - **FH3010** - This is flagholder comes installed on our full size sign stands, such as the TF18, and may be attached with screws to replace damaged units or added to rigid signs, barricades, or posts. Displays three flags.
- 4 - **FH-STABLOCK** - Designed for use with the Fold and Roll™ sign system, this flagholder sockets into the 1" square vertical tube and locks in place with a spring button. Displays two flags.

Roll-Up Signs - West



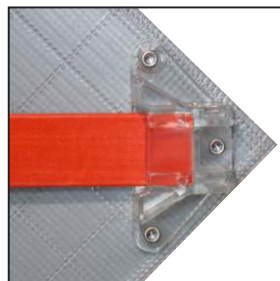
FACT SHEET

4



Plastic Buckle Pocket

New & improved strength! Plastic Buckle Pockets are made of tough polycarbonate material and are attached to the sign with elastic which keeps constant tension on the sign in hot and cold weather.



Delta Pocket

At 3/4" deep, the Delta Pocket is designed to be easier to deploy than conventional pockets. Made of tough polycarbonate, it features increased strength and the smallest storage diameter in the industry.



Rectangular Pocket

Featuring a full depth design, rectangular pockets are typically used at the top and bottom of the sign. Made of tough polycarbonate, they will fit all pocket style sign holders.



Cloth Pocket

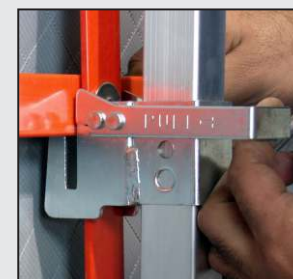
The cloth pocket is sewn to the sign face and is made from nylon reinforced vinyl. Cloth pockets are easy to use and allow for the smallest rolled up storage diameter.



DualClamp features openings for 1" and 1-1/4" square masts.



UniClamp allows the sign to be affixed to various size square and round masts.



Roll-Up Bracket (RUB3315) allows the sign to be mounted to the vertical mast on full size stands.

Mast Clamp Options for Roll-Up Signs



Standard Overlays

Most signs may have velcro added to specific words that allows for multiple messages to be displayed using a single roll-up sign. Overlays are made from the same material as the sign and come with velcro strips on the back. Snap attachment is also available on request.

Dual Transition Symbol Sign Overlays



Removable Overlay (least expensive)



Permanent "Page Over" Overlay (eliminates the risk of lost overlays)

Overlay Options (Changeable Message) Options for Roll-Up Signs



DICKE Safety Products

www.dicketool.com

Illinois - 1201 Warren Avenue - Downers Grove, IL 60515 - Ph: 630.969.0050 - Fax: 630.969.3973
Oregon - 1845 Anunsen Street, N.E. - Salem, OR 97301 - Ph: 800.333.5641 - Fax: 503.364.0340