

Roll-Up Signs- East

FACT SHEET



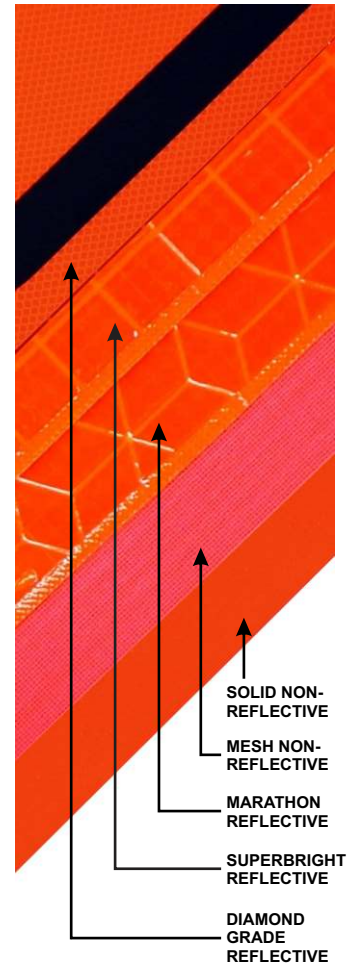
Roll-Up Signs:

Below are part numbers for our most popular roll-up signs. Part numbers for other sizes, configurations, and colors are available on request. See pag 2 for our standard screen list.

NON-REFLECTIVE - Orange			
PART NUMBER	SIZE	MATERIAL	RIBS - THICKNESS (Vertical & Horizontal)
RUM36-200	36" X 36"	Mesh Vinyl	1/4" & 3/16"
RUM36-SO	36" X 36"	"	No Ribs
RUM48-200	48" x 48"	"	1/4" & 3/16"
RUM48-SO	48" x 48"	"	No Ribs
RUNR36-200	36" X 36"	Solid Vinyl	1/4" & 3/16"
RUNR36-SO	36" X 36"	"	No Ribs
RUNR48-200	48" x 48"	"	1/4" & 3/16"
RUNR48-SO	48" x 48"	"	No Ribs

REFLECTIVE - Orange			
PART NUMBER	SIZE	MATERIAL	RIBS - THICKNESS (Vertical & Horizontal)
RUR36-200	36" X 36"	Superbright™	1/4" & 3/16"
RUR36-SO	36" X 36"	"	No Ribs
RUR48-100	48" x 48"	"	5/16" & 3/16"
RUR48-200	48" x 48"	"	1/4" & 3/16"
RUR48-SO	48" X 48"	"	No Ribs
RUR36MAR-200	36" X 36"	Marathon™	1/4" & 3/16"
RUR36MAR-SO	36" X 36"	"	No Ribs
RUR48MAR-100	48" x 48"	"	5/16" & 3/16"
RUR48MAR-200	48" x 48"	"	1/4" & 3/16"
RUR48MAR-SO	48" X 48"	"	No Ribs
RUR36DG-200	36" X 36"	Diamond Grade™	1/4" & 3/16"
RUR36DG-SO	36" X 36"	"	No Ribs
RUR48DG-100	48" x 48"	"	5/16" & 3/16"
RUR48DG-200	48" x 48"	"	1/4" & 3/16"
RUR48DG-SO	48" X 48"	"	No Ribs

Sign Materials:



Overlays:

Overlays are patches of matching sign material that may be printed with words, numbers, or arrows and attached to signs to change their message. For example, a 1/2 MILE overlay may be placed over the word AHEAD on a ROAD WORK AHEAD sign so it reads ROAD WORK 1/2 MILE.

NON-REFLECTIVE OVERLAYS	
PART NUMBER	MATERIAL
FPO36M	Mesh Vinyl
FPO48M	"
FPO36NR	Solid Vinyl
FPO48NR	"

REFLECTIVE OVERLAYS	
PART NUMBER	MATERIAL
FPO36R	Superbright™
FPO48R	"
FPO36MAR	Marathon™
FPO48MAR	"
FPO36DG	Diamond Grade™
FPO48DG	"



DICKE SAFETY PRODUCTS

Illinois - 1201 Warren Avenue • Downers Grove, IL 60515 • Ph: 630.969.0050 • Fax: 630.969.3973
 Oregon - 1845 Anunsen Street, N.E. • Salem, OR 97301 • Ph: 800.333.5641 • Fax: 503.364.0340

www.dicketool.com

Roll-Up Signs- East

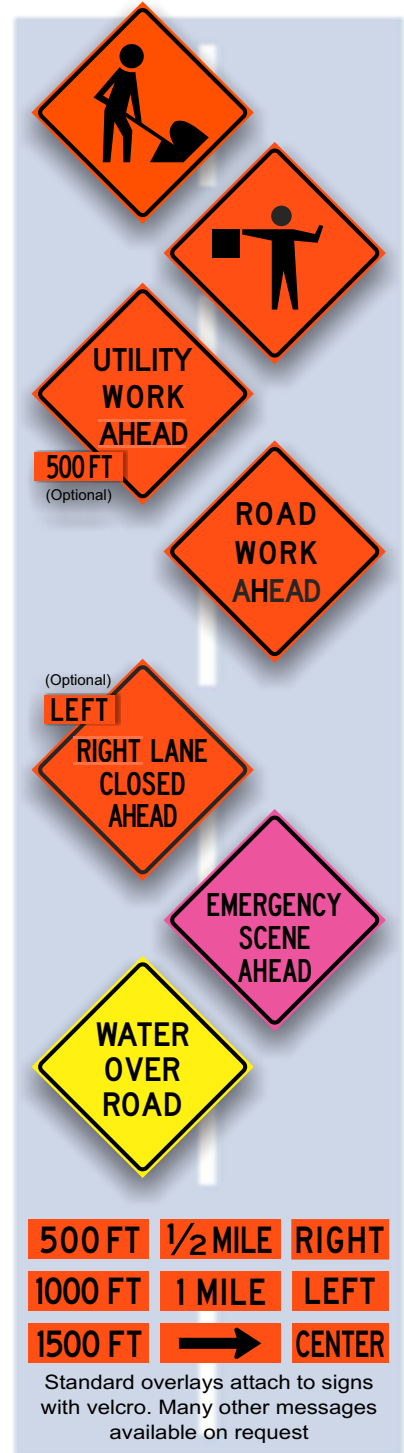
FACT SHEET



Current Screen List - Sign legends may be printed on any reflective or non-reflective material and custom legends are available for an additional temporary screen fee. Most legends may be equipped with velcro strips to allow overlays to be utilized. Custom legends and stenciling on the backs of signs are also available for an additional fee.

Abrupt Edge
 Accident Ahead
 Be Prepared To Stop (W3-4)
 Begin Work Zone
 Bike Lane Closed Ahead
 Bike Symbol Share The Road
 Bikes on Roadway
 Border Only
 Bridge Work Ahead
 Brush Cutter Ahead
 Bump (W8-1)
 Bump Ahead
 Caution Log Trucks
 Center Lane Closed Ahead (W20-5C)
 Construction Ahead
 Danger Overhead Power Lines
 Detour with Velcro
 Detour Ahead (W20-2)
 Dip (W8-2)
 Do Not Pass (R4-1)
 Emergency Scene Ahead
 Emergency Truck Repair Ahead
 End Road Work (G20-2)
 End Utility Work
 End Work Zone
 Exit - W/ Arrow
 Fire Activity Ahead
 Flagger Ahead (W20-7)
 Flagger Symbol (W20-7A)
 Flagger Paddle Symbol - short staff
 Flagger Paddle Symbol - long staff
 Fresh Oil (W21-2)
 Grooved Pavement (W8-15)
 Guardrail Damage Ahead
 High Water
 Incident Ahead
 Keep Left with Arrow Symbol (R4-8A)
 Keep Right with Arrow Symbol (R4-7A)
 Lane Closed (C30)
 Lane Closed Ahead
 Left Lane Closed
 Left Lane Closed Ahead (W20-5L)
 Litter Crew Ahead
 Log Trucks Entering Highway
 Loose Gravel (W8-7)
 Men Working
 Men Working Ahead
 Merge Left
 Merge Right
 Merge Symbol Left (W4-1L)
 Merge Symbol Right (W4-1R)
 Motorcycles Use Extreme Caution
 Mowing Ahead
 Narrow Lane (C12)
 New Traffic Pattern Ahead (W23-2)
 No Right Turn (Text)
 No Right Turn Symbol (R3-1)
 No Left Turn (Text)
 No Left Turn Symbol (R3-2)
 One Lane Ahead
 One Lane Road Ahead (W20-4)
 Pipeline Construction Ahead
 Pipeline Crossing Ahead
 Prescribed Burn Ahead

Prescribed Burn Ahead Do Not Report
 Ramp Closed
 Ramp Closed Ahead
 Ramp Closed Kit with overlays
 Ramp Work Ahead
 Reduced Speed Ahead (R2-5)
 Reduce Speed Ahead Symbol (W3-5)
 Reverse Curve Arrow symbol-Left (W1-4L)
 Reverse Curve Arrow symbol-Right (W1-4R)
 Right Lane Closed
 Right Lane Closed Ahead (W20-5R)
 Right Two Lanes Closed Ahead (W20-5A)
 2 Right Lanes Closed Ahead (C20)
 Right Shoulder Closed (W21-5A)
 Right Shoulder Closed Ahead (W21-5B)
 Road Closed (R11-2)
 Road Closed Ahead (W20-3)
 Road Closed to Thru Traffic (R11-4)
 Road Machinery Ahead (W21-3)
 Road Work Ahead (W20-1)
 Rough Road (W8-8)
 Rumble Strips
 Rumble Strips Ahead
 Shoulder Closed
 Shoulder Closed Ahead
 Shoulder Drop Off Symbol (W8-17)
 Shoulder Work (W21-5)
 Shoulder Work Ahead
 Sidewalk Closed
 Signal Work Ahead
 Single Lane Ahead (W20-6)
 Slow
 Smoke Limited Visibility
 Special Event Ahead
 Speed Limit XX (R2-1)
 Speed Reduction Ahead Symbol (W3-5)
 Steel Plate Ahead (W8-9)
 Stop Ahead Symbol (arrow) (W3-1)
 Stop for Pedestrians (R1-6A)
 Stop Sign Symbol (octagon) (R1-1)
 Survey Crew (W21-6)
 Survey Crew Ahead
 Timber Falling
 Transition Right Symbol (W4-2L)
 Transition Left Symbol (W4-2R)
 Transition Symbol (Double)
 Tree Work Ahead
 Truck Crossing (W8-6)
 Trucks Entering and Leaving Highway
 Trucks Entering Highway
 Trucks Entering Roadway
 Trucks Entering Exiting
 Uneven Lanes (W8-11)
 Utility Work Ahead (W21-7)
 Water Over Road (W14-7)
 Work Area Ahead
 Work Zone Begins
 Worker Symbol (W21-1A)
 Workers Ahead
 Wreck Ahead
 Yield Ahead Symbol (arrow) (W3-2)
 Yield Symbol (R1-2)
 Yield for Pedestrians (R1-6)
 Yield To Oncoming Traffic



DICKE SAFETY PRODUCTS

www.dicketool.com

2.

Illinois - 1201 Warren Avenue • Downers Grove, IL 60515 • Ph: 630.969.0050 • Fax: 630.969.3973
 Oregon - 1845 Anunsen Street, N.E. • Salem, OR 97301 • Ph: 800.333.5641 • Fax: 503.364.0340