

TwinFlex™ Stands

TF12 Series

Dual Spring Stands for Roll-Up Signs

Model Number	Sign Height*	Roll-Up Sign Holder Type
TF12C	12"	Channel
TF12P*	18"	Post & Tube
TF12W	12"	Screwlock

* Dicke West Exclusive

TwinFlex™ compact stands feature steel and aluminum construction for long-lasting, dependable service. Dual heavy duty steel coil springs provide stability in gusty wind conditions. The TF12 series compact stands are available in several models designed to display roll-up signs at a mounting height of 12" to 18". All stands feature foot-actuated leg releases with adjustable locking positions for stability on uneven terrain.

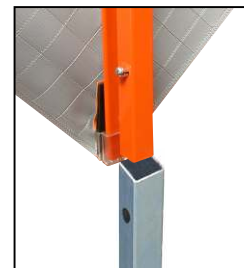
- MUTCD and NCHRP-350 compliant.
- TwinFlex™ compact stands offer three methods of roll-up sign attachment: Screwlock, Post and Tube*, or Channel style.
- Legs feature .100" wall aircraft quality aluminum tubing and are 30" long telescoping to 51".



ScrewLock™ sign holder



Channel Style sign holder



Post & Tube sign holder