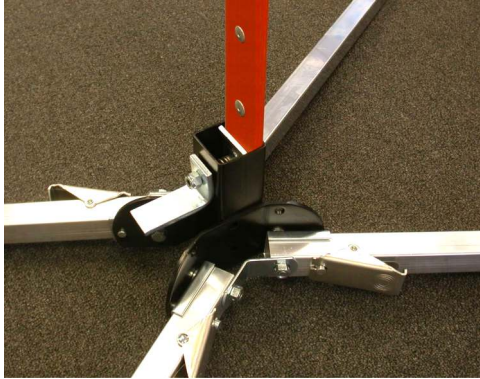


DL1500

Sign Stand for Roll-Up Signs

FACT SHEET



Foot Lever Actuated Sign Holder
for 1-3/4" Wide Vertical Ribs



DL1500
w/ 36" Reflective Roll-Up Sign

Features:

- Aluminum and steel construction.
- Displays both 36" and 48" roll-up signs with 1-3/4" wide vertical ribs.
- Supplied with spring loaded step-lever sign holder.
- Telescoping legs are equipped with kick release which allows for quick set-up and tear-down; two position height adjustment allows for uneven terrain.
- Open footprint: 53" x 93"
- Closed storage dimensions: 8" x 71/4" x 30"
- Weight: 15 lbs.



DL1500
Storage Position



DICKE Safety Products

www.dicketool.com

Illinois - 1201 Warren Avenue - Downers Grove, IL 60515 - Ph: 630.969.0050 - Fax: 630.969.3973
Oregon - 1845 Anunsen Street, N.E. - Salem, OR 97301 - Ph: 800.333.5641 - Fax: 503.364.0340